

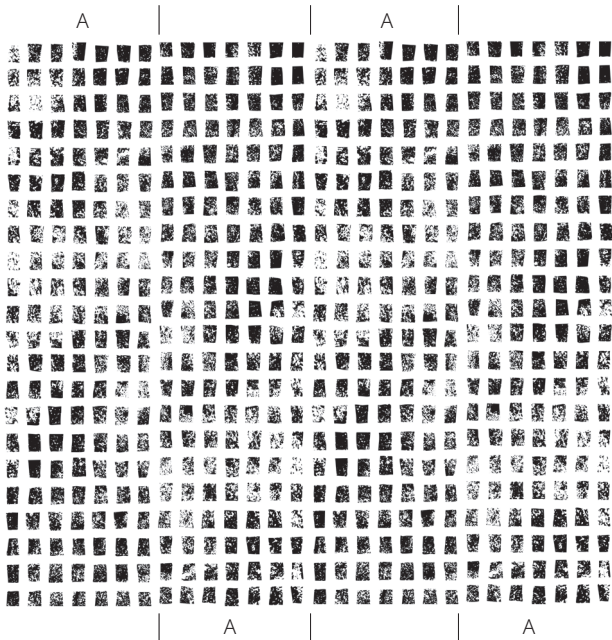
# NADINE

# WEATHER

# STONE

## ATELIER

## TRAPEZIUM



*This is a 4-panel installation.*

**Characteristics** A hand drawn design creating a sunken trapezoid effect, hand trowel work catching all delicate nuances created by our artists' hands. Multilayered textures. Raw material: Plaster and sand. Simple ingredients, expertly applied.

This is a handmade product, made with organic materials, and a slight variation in color and tone will exist. This product is not guaranteed against fading or wear.

### Hanging Instructions

**PLEASE READ THROUGH BEFORE HANGING.**

Inspect your wallcovering for major defects in construction prior to cutting, glueing or installation. No claims will be honored after merchandise has been cut or hung. No labor claims will be honored for any reason.

**NOTE:** Each panel is notated with the recommended sequential and directional placement necessary for a successful installation. The highest quality of workmanship is employed in the production of this wallcovering. Careful inspection is made before shipment, however, final inspection and approval are the ultimate responsibilities of the customer. Correct design, color and quantity should be verified before the wallcovering is cut or hung.

**PROFESSIONAL HANGERS:**

**PREP:**

For this product we recommend thorough wall preparation and eliminating any roughness in order to achieve the best results. We recommend using a smooth nap roller when applying primer or low sheen paint.

**PASTING:**

Paste the wall. Prior to generously applying paste to the back of the wallpaper, first lightly mist the back of the wallcovering with water to prevent any shrinkage or bubbles from forming after installation. Apply paste edge to edge, smoothly and evenly using a paint roller. Book the paper by loosely folding the pasted sides together without creasing. Align the edges carefully so the paste doesn't dry out. Gently roll the booked piece to ensure the pasted sides make good contact. Allow to soak and expand for 3-5 minutes. Immediately clean off traces of glue with lukewarm water. Avoid any traces of glue on the wallcovering.

**INSTALLATION:**

Our wallcovering has not been pre-trimmed, and trimming is recommended for best results. Use a non-marking plastic trowel to remove all air pockets, wrinkles and excess paste by gently troweling the wallcovering from the center to the edges. USING A CLEAN, DAMP SPONGE, absorb with a cloth without rubbing to avoid buffing the wallcovering and repeat the operation if necessary. A seam roller can be used to lightly roll the edges of paper, being careful not to push paste out. Repeat the procedure with the second panel, sliding it into position with its edge butted up against the edge of the preceding panel. Be sure to match up the design. Do not overlap the wallcovering.

If you have any questions feel free to contact us directly.



Website



YouTube



Instagram