

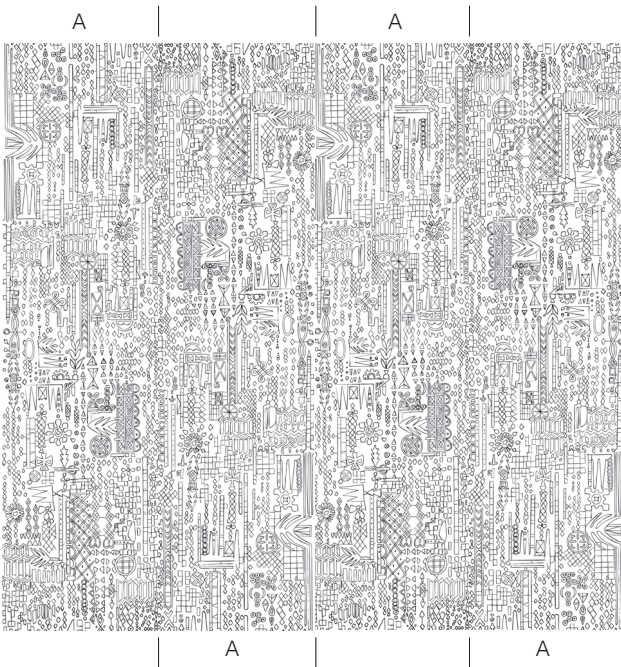
N A D I N E

W E A T H E R

S T O N E

ATELIER

KLOTH



This is a 4-panel installation.

Characteristics Inspired by the delicate fabric of a kimono, Kloth transforms white Kozo paper with a hand-drawn, all-over pattern that mimics textile weaving. This design seamlessly blends modern digital printing with traditional Kozo craftsmanship, building depth through multi-layered applications of plant-based size and resist techniques. The result is a richly textured color story, accented with subtle touches of gilt for a refined finish.

This is a handmade product, made with organic materials, and a slight variation in color and tone will exist. This product is not guaranteed against fading or wear.

Hanging Instructions

PLEASE READ THROUGH BEFORE HANGING.

Inspect your wallcovering for major defects in construction prior to cutting, glueing or installation. No claims will be honored after merchandise has been cut or hung. No labor claims will be honored for any reason.

NOTE: Each panel is notated with the recommended sequential and directional placement necessary for a successful installation. The highest quality of workmanship is employed in the production of this wallcovering. Careful inspection is made before shipment, however, final inspection and approval are the ultimate responsibilities of the customer. Correct design, color and quantity should be verified before the wallcovering is cut or hung.

PREP:

For this product we recommend thorough wall preparation and eliminating any roughness in order to achieve the best results.

We recommend using white colored lining paper or an ultra smooth nap roller with white colored primer or low sheen paint.

PASTING:

Paste the wall with a clear, non-staining adhesive and hang the strip dry. Paste using a medium roller. Paste the wall the width of a strip then hang the strip and so on. Immediately clean off traces of glue with lukewarm water. Avoid any traces of glue on the wallcovering.

INSTALLATION:

Our wallcovering has not been pre-trimmed, and trimming is recommended for best results. Trim salvage to the edge of the design for a pattern match. (See rendering.) Use a non-marking plastic trowel remove all air pockets, wrinkles and excess paste by gently troweling the wallcovering from the center to the edges.

USING A CLEAN, DAMP SPONGE, absorb with a cloth with out rubbing to avoid buffing the wallcovering and repeat the operation if necessary. A seam roller can be used to lightly roll the edges of paper being careful not to push paste out. Repeat the procedure with the second panel, sliding it into position with its edge butted up against the edge of the preceding panel. Be sure to match up the design. Do not overlap the wallcovering.

If you have any questions feel free to contact us directly.



Website



YouTube



Instagram